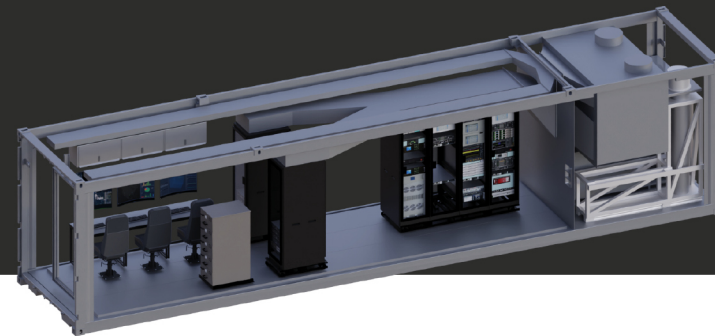




MODULAR OPEN SYSTEM ARCHITECTURE
INSTRUMENTATION CONTAINERS



MOSAIC Approach

Package mobile, standalone long-range missile test capability into containers that meet ISO standards that can be placed on many different types of leased ships or be deployed on land at any desired test location

INCLUDES

- Telemetry*
- Flight Safety*
- SATCOM
- Weather Data Collection Capabilities

* Telemetry and Flight Safety are both comprised of two fully independent, redundant strings

PHYSICAL ARCHITECTURE

- 40' ISO Containers for Equipment & Operators
- 20' Containers for Sensors & Emitters
- 20' Mobile Power Container



COMMUNICATIONS & ELECTRICAL STANDARDS

- 2-Source Power Connections; 120/208VAC 3Ph 60Hz
- Integrated Battery Power
- Dual Integrated Networks Capable of Two Different Classifications

COMMAND & CONTROL ARCHITECTURE

- Internal: TENA & Agile Forge Integrate Subsystems to Enable C2, Situational Awareness, and Automation
- External: TENA, Agile Forge, & Strip-and-Ship



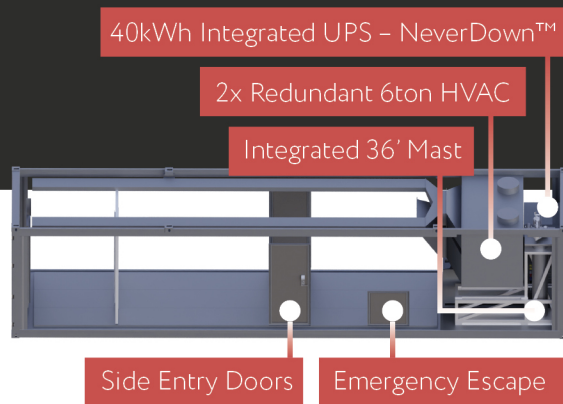
BUSINESS DEVELOPMENT

BD@GeeksAndNerds.com



GEEKS AND NERDS.COM





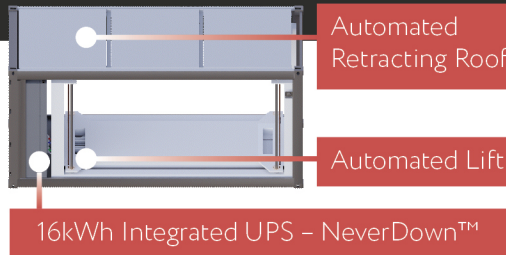
40' High-Cube Container Multipurpose Portable Accommodation Module (PAM) Frame

COMMONALITY

- Design Used for both Backend and C2 Modules
- Common Frame, Doors, HVAC, UPS, and Masts

PAM REQUIREMENTS

- Meets U.S. Coast Guard Required PAM Requirements
- PAM ensures Life Safety at Sea for Operators



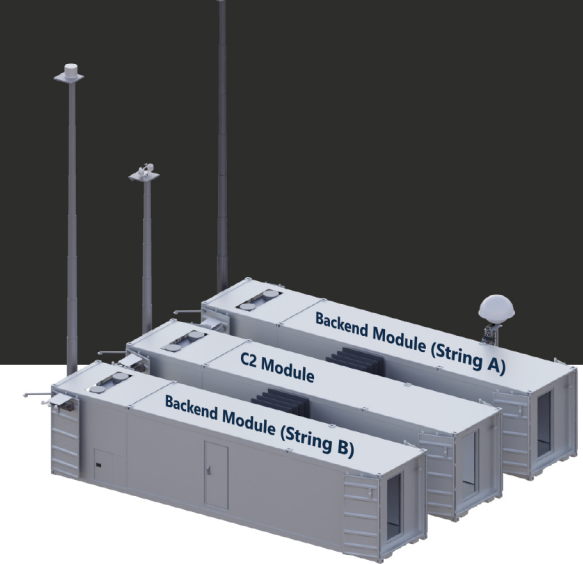
20' High-Cube Container Sensor Module

COMMONALITY

- Design Used for both TM Frontend and FSS Frontend Modules
- Common Lift, Retracting Roof, and Integrated UPS
- Extensible Design Ready for Future Payloads

SUPPORTS SENSORS UP TO

Weight 10,000lbs **Width** 7'2"
Length 16'3" **Height** 7'8"



Multipurpose Portable Accommodation Module (PAM) Frame

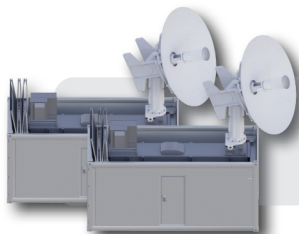
Designed to support Optics, Radar, or Other Backend Equipment

Multipurpose PAM: C2 Module

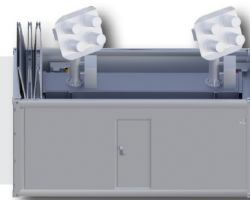
Extensible to Support Any Expeditionary C2 Needs

Multipurpose PAM: Backend Module

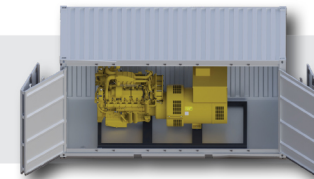
- Could be Used to Support TM Only Mission without Redundancy Requirements
- Designed to support Optics, Radar, or Other Backend Equipment



Separate 20' TM Antenna Modules



Single 20' FSS Antenna Module for 2x FSS Frontends



Power Module

